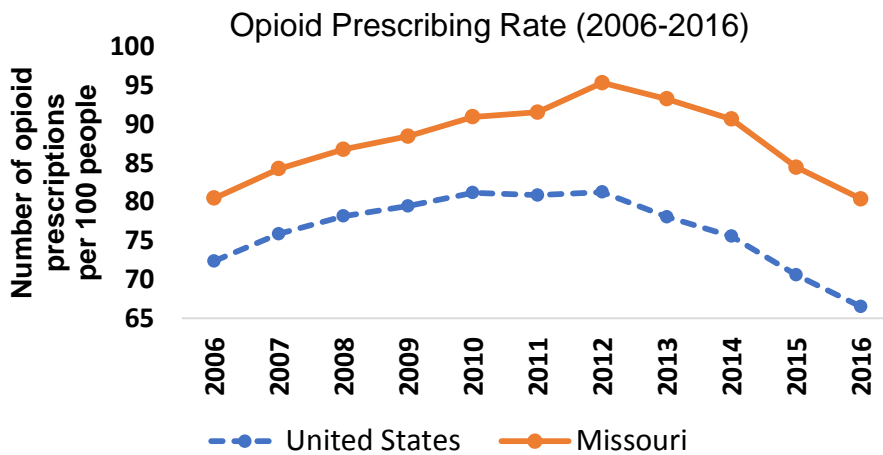
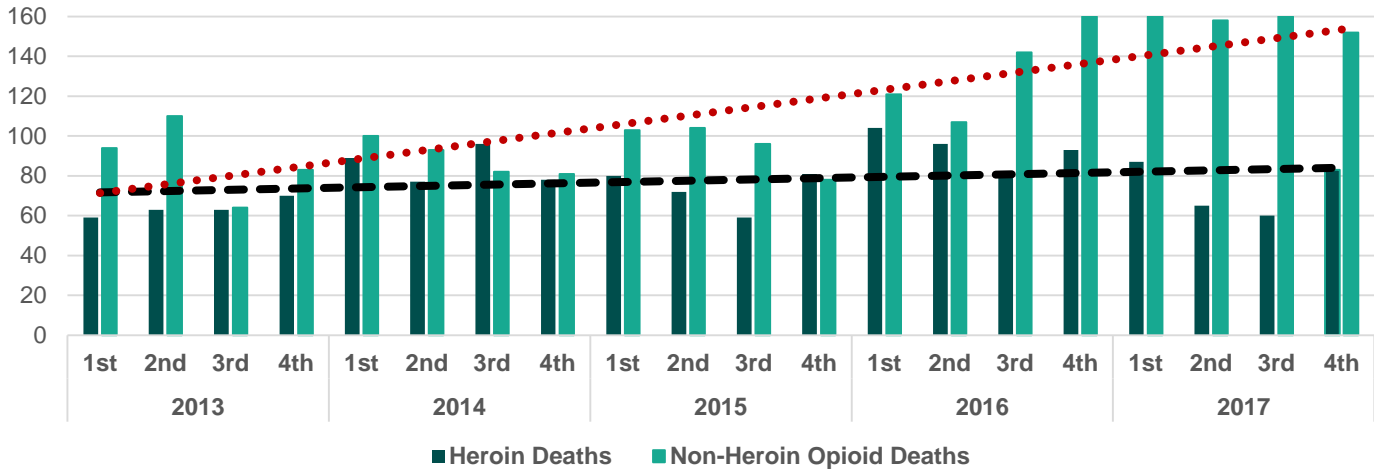


# Missouri Opioid Data Factsheet

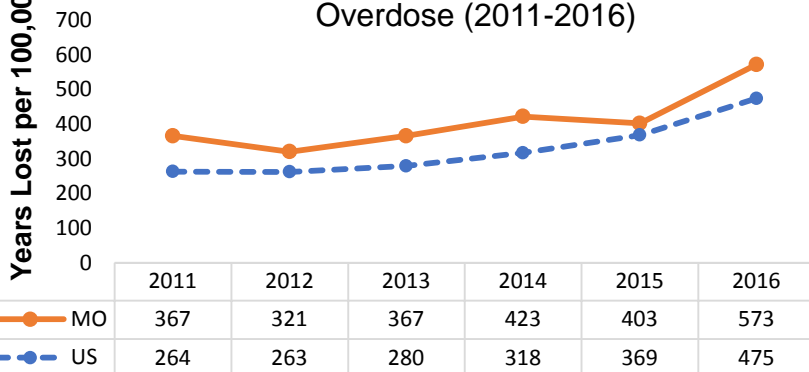
With 908 deaths in 2016, Missouri ranked 19<sup>th</sup> in the nation for opioid overdose deaths. There was a 35% increase in deaths between 2015 and 2016 (672 vs 908 deaths). However, the increase in death was smaller from 2016 to 2017 (5% increase; 908 vs 951 deaths, respectively).

## Quarterly Missouri Resident Heroin vs Non-Heroin Opioid (e.g., Fentanyl) Deaths



Source: Centers for Disease Control and Prevention (2017). Opioid Prescribing Rate Maps. Retrieved from <https://www.cdc.gov/drugoverdose/maps/rxrate-maps.html>

### Years of Potential Life Lost (YPLL) Due to Opioid Overdose (2011-2016)



### Total Years of Life Lost 2016

**Missouri: 32,517**

**Nationally: 1,437,269**

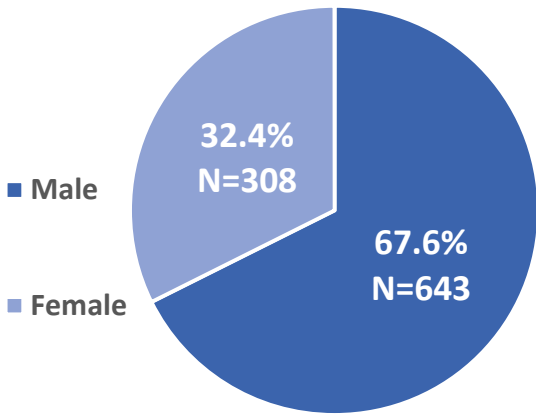
YPLL involves estimating the average time a person would have lived had they not died prematurely.

Source: Bureau of Vital Statistics, Missouri Department of Health and Senior Services and WONDER, Centers for Disease Control and Prevention (2017). Retrieved from <https://health.mo.gov/data/opioids/impact.php>



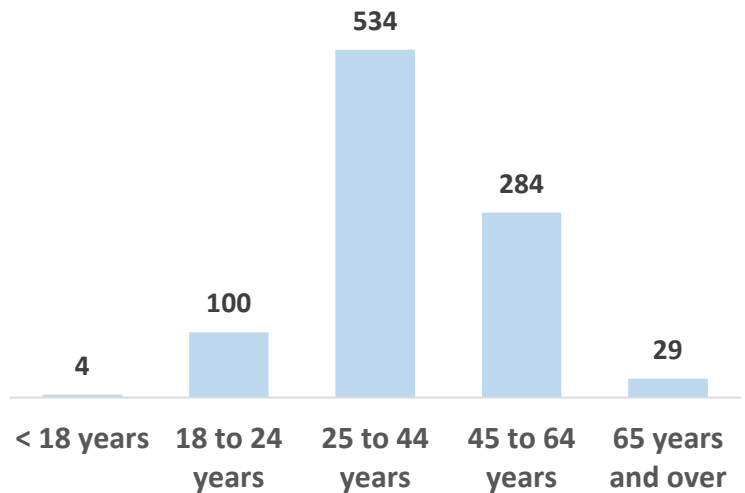
**1 out of every 65 deaths were due to opioid overdoses in 2017**

**Deaths by Sex**



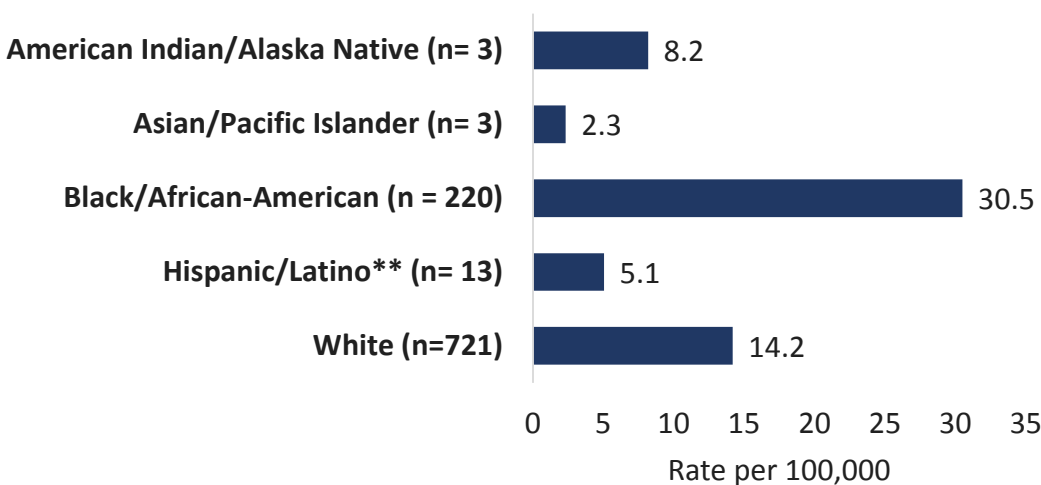
While men experienced the most overdoses, women experienced a larger percent change in overdoses from 2005-2006 and 2015-2017

**Deaths by Age**



## 2017 Opioid Related Death Rate in Missouri by Race and Ethnicity

Although the highest number of overdose deaths occurred amongst White males, when adjusted by population, Black males are twice as likely to die from an overdose than White males.



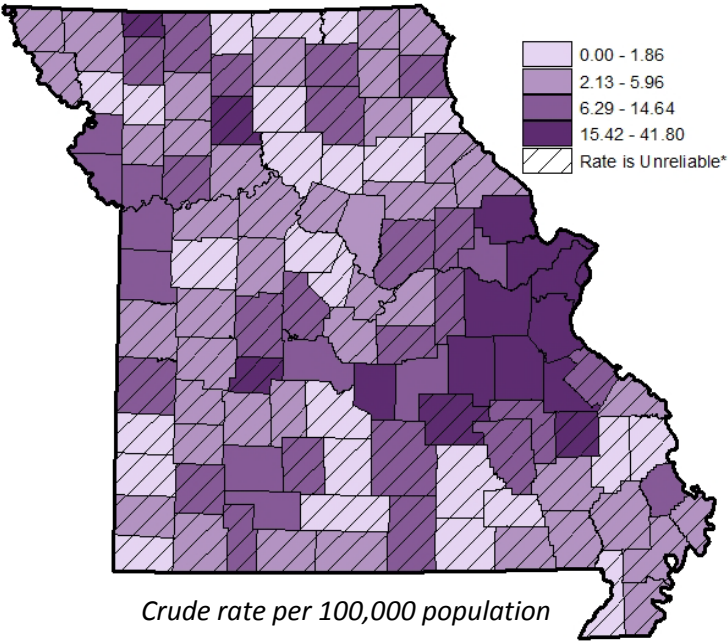
\*\*Ethnicity is separate from race - these individuals are also included somewhere in the race counts. The number next to each race is the crude value of how many individuals died from an opioid overdose in 2017. There were 4 individuals who did not identify as one of the above categories in 2017.

# Regional Differences in Opioid Overdose Deaths and Prescribing



Region	# of Overdoses (2016-2017)	Overdose Death Rate per 100,000 (2016-2017)	Opioid Prescribing Rate (2016)
A	202	7.3	83
B	18	5.0	58
C	1,288	28.4	75
D	163	9.1	71
E	26	3.9	113
F/I	69/56	6.9/15.5	67
G	12	4.3	64
H	24	5.1	64

## Deaths Due to Opioid Overdoses (2013-2017)



The majority of counties with high opioid-involved mortality rates are clustered in and to the south of the St. Louis metropolitan region, though some additional counties with high opioid-involved death rates can be found across the state. Missouri's metropolitan areas consistently have high rates of opioid-involved overdose mortality. It should be noted that many counties' death rates are based on fewer than 20 deaths and should be interpreted cautiously as mortality rates based on low counts can be unstable. Opioid-involved emergency room discharge rates follow a similar statewide distribution with the greatest rates in the St. Louis area.

### Top County Rank by Death Rate

- St. Louis City
- Jefferson
- Franklin
- Worth
- St. Louis

### Top County Rank by Total Number of Deaths

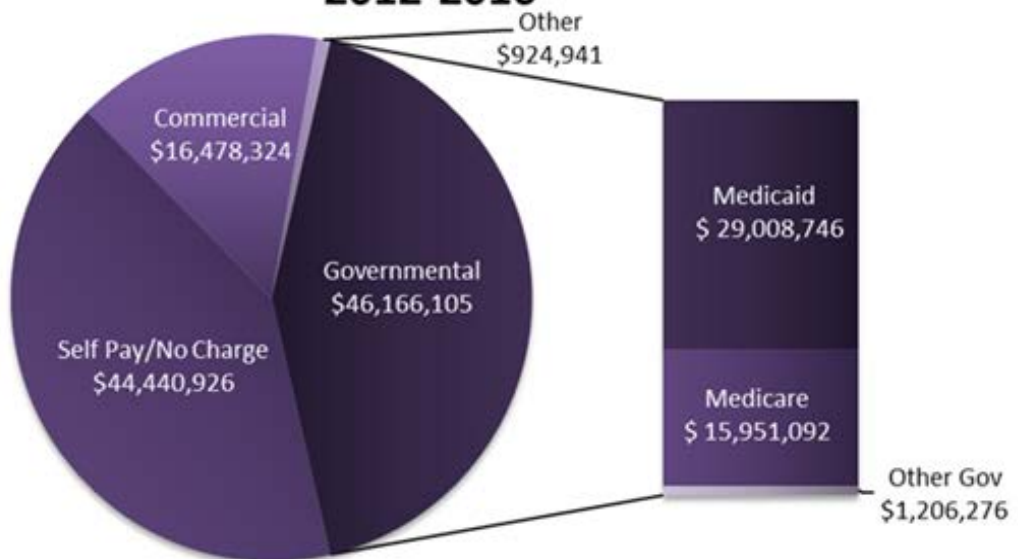
- St. Louis
- St. Louis City
- St. Charles
- Jefferson
- Jackson



**Total cost of the Opioid Epidemic in 2016 Alone:**  
**\$12,600,000,000**

“The cost listed above represents the impact of two economic indicators — fatality costs, which are associated with premature mortality, and nonfatality costs, which are associated with individuals with opioid use disorder and accrue from reduced productivity and increased consumption of health care and social services.” Source: U.S. Bureau of Economic Analysis, 2016 Gross Domestic Product (GDP) by State and author’s replication of CEA, 2017 methods.

## Insurance Payers Missouri Opioid Abuse Emergency Room Discharges 2012-2016



### Helpful links:

DHSS Opioid Dashboard: <https://health.mo.gov/data/opioids/>

MHA Opioid Initiative: <https://web.mhanet.com/opioid-initiative.aspx>

St. Louis County PDMP: <https://www.stlouisco.com/pdmp>

Missouri Opioid STR Website: <https://missouriopioidstr.org/resources/>

MO-HOPE Website: <https://mohopeproject.org/>