



Missouri Weekly Influenza Surveillance Report 2017-2018 Influenza Season¹

Week 50: December 10 – 16, 2017

All data are preliminary and may change as more reports are received.

Summary:

- The estimated influenza activity in Missouri is Widespread².
- During Week 50, a total of 1,630 laboratory-positive³ influenza cases (1,390 influenza A, 231 influenza B, and nine untyped) were reported. A season-to-date total of 5,715 laboratory-positive influenza cases (4,363 influenza A, 1,300 influenza B, and 52 untyped) have been reported in Missouri as of Week 50. The influenza type for reported season-to-date cases includes 76% influenza A, 23% influenza B, and 1% untyped. Fifteen laboratory-positive cases of influenza A (H3) were reported by the Missouri State Public Health Laboratory (MSPHL) during Week 50.
- Influenza-like illness (ILI) activity was above baseline for both the Missouri Outpatient ILI Surveillance Network (ILINet) and the hospital emergency room visit chief complaint data reported through ESSENCE. The reported percentage of visits for ILI was 3.49% (Figure 5) and 3.21% (Figure 7) through ILINet and ESSENCE respectively.⁴ The ILI data from a small number of sites located in the Northwest Region of the state is temporarily unavailable in ESSENCE. Therefore, the ILI data for the Northwest Region should be interpreted with caution. The percentage of respiratory specimens testing positive for influenza in Missouri laboratories reporting to the National Respiratory and Enteric Virus Surveillance System (NREVSS) increased during Week 50 (Figure 6).
- Two influenza-associated deaths have been reported in Missouri as of Week 50.⁵ During Week 49, 46 deaths involving Pneumonia and Influenza (P&I) were reported to the Bureau of Vital Records, resulting in a season-to-date total of 416 P&I associated deaths in Missouri.⁶
- Eight outbreaks of influenza have been reported and three influenza or ILI-associated school closures have been reported in Missouri as of Week 50.
- Influenza activity increased in the U.S. during Week 49. National influenza surveillance information is prepared by CDC and is included in the weekly FluView report, which is available online at <http://www.cdc.gov/flu/weekly/fluactivitysurv.htm>.

¹The 2017-2018 influenza season begins CDC Week 40 (week ending October 7, 2017) and ends CDC Week 39 (week ending September 29, 2018).

²Widespread is defined as: Outbreaks of influenza or increases in ILI cases and recent laboratory-confirmed influenza in at least half the regions of the state with recent laboratory evidence of influenza in the state.

³Laboratory-positive influenza includes the following test methods: rapid influenza diagnostic tests (antigen), reverse transcriptase polymerase chain reaction (RT-PCR) and other molecular assays, immunofluorescence antibody staining (Direct (DFA) or Indirect (IFA)), or viral culture.

⁴Influenza-like illness (ILI) is defined by ILINet as fever (temperature of 100°F [37.8°C] or greater) and a cough and/or a sore throat without a known cause other than influenza. ILI is defined by ESSENCE as Emergency Department chief complaints for Influenza or (FeverPlus and (Cough or SoreThroat) and not NonILIFevers).

⁵All influenza-associated deaths became reportable in Missouri in 2016.

⁶The P&I data are available one week later. The P&I data for the CDC Week provided is the most current data available.

Surveillance Data:

Interactive Maps

The jurisdiction-specific influenza data are provided through interactive maps available at <http://arcg.is/0mmOqC>. Click on the jurisdiction to view the influenza data specific to that jurisdiction.

- Reported Laboratory-positive Influenza Cases by Influenza Type by Jurisdiction, CDC Week 50
- Reported Week-specific Rate per 100,000 Population, CDC Week 50
- Reported Laboratory-positive Influenza Cases by Influenza Type by Jurisdiction, Season-to-Date
- Reported Rate per 100,000 Population, Season-to-Date

Data Figures

Figure 1. Number of Laboratory-positive[†] Influenza Cases by Influenza Type, Missouri, CDC Week 50 (December 10 – 16, 2017)^{*}

Influenza Type	Week 48	Week 49	Week 50	2017-2018* Season-to-Date
Influenza A	588	1,003	1,390	4,363
Influenza B	205	233	231	1,300
Influenza Unknown Or Untyped	7	5	9	52
Total	800	1,241	1,630	5,715

[†]Laboratory-positive influenza includes the following test methods: rapid influenza diagnostic tests (antigen), reverse transcriptase polymerase chain reaction (RT-PCR) and other molecular assays, immunofluorescence antibody staining (Direct (DFA) or Indirect (IFA)), or viral culture.

^{*}Influenza season begins week ending October 7, 2017 (CDC Week 40) Data Source: Missouri Health Information Surveillance System (WebSurv).

Figure 2. Number of Laboratory-positive[†] Influenza Cases and Case Rates by Age Group, Missouri, CDC Week 50 (December 10 – 16, 2017)^{}**

Age Group	Week 50 Cases	Week 50 Rate [‡]	2017-2018* Season-to-Date	2017-2018* Season-to-Date Rate [‡]
00-04	229	61.17	882	235.60
05-24	707	44.06	2,119	132.06
25-49	268	14.01	1,098	57.38
50-64	192	15.53	741	59.93
65+	234	24.50	875	91.63
Total	1,630	26.79	5,715	93.94

[†]Laboratory-positive influenza includes the following test methods: rapid influenza diagnostic tests (antigen), reverse transcriptase polymerase chain reaction (RT-PCR) and other molecular assays, immunofluorescence antibody staining (Direct (DFA) or Indirect (IFA)), or viral culture.

^{*}Influenza season begins week ending October 7, 2017 (CDC Week 40) Data Source: Missouri Health Information Surveillance System (WebSurv)

[‡]Incidence Rate per 100,000 population

Figure 3. Number of Laboratory-positive[†] Influenza Cases and Case Rates by Region, Missouri, CDC Week 50 (December 10 – 16, 2017)^{*‡}

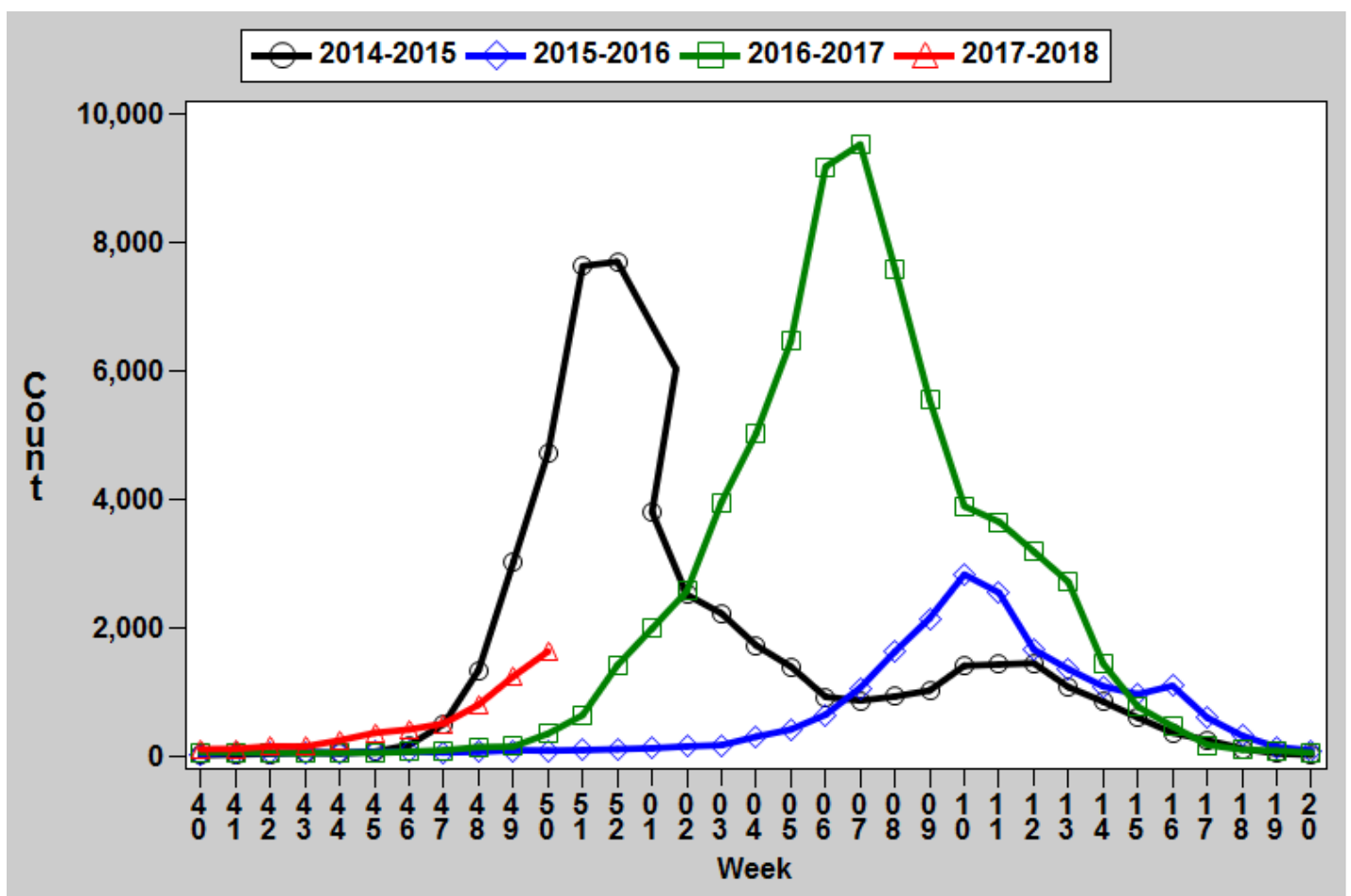
Region	Week 50 Cases	Week 50 Rate [‡]	2017-2018* Season-to-Date	2017-2018* Season-to-Date Rate [‡]
Central	329	48.60	843	124.52
Eastern	615	27.14	1,671	73.74
Northwest	214	13.40	1,066	66.73
Southeast	215	45.58	1,087	230.44
Southwest	257	23.99	1,048	97.83
Total	1,630	26.79	5,715	93.94

[†]Laboratory-positive influenza includes the following test methods: rapid influenza diagnostic tests (antigen), reverse transcriptase polymerase chain reaction (RT-PCR) and other molecular assays, immunofluorescence antibody staining (Direct (DFA) or Indirect (IFA)), or viral culture.

^{*}Influenza season begins week ending October 7, 2017 (CDC Week 40) Data Source: Missouri Health Information Surveillance System (WebSurv)

[‡]Incidence Rate per 100,000 population

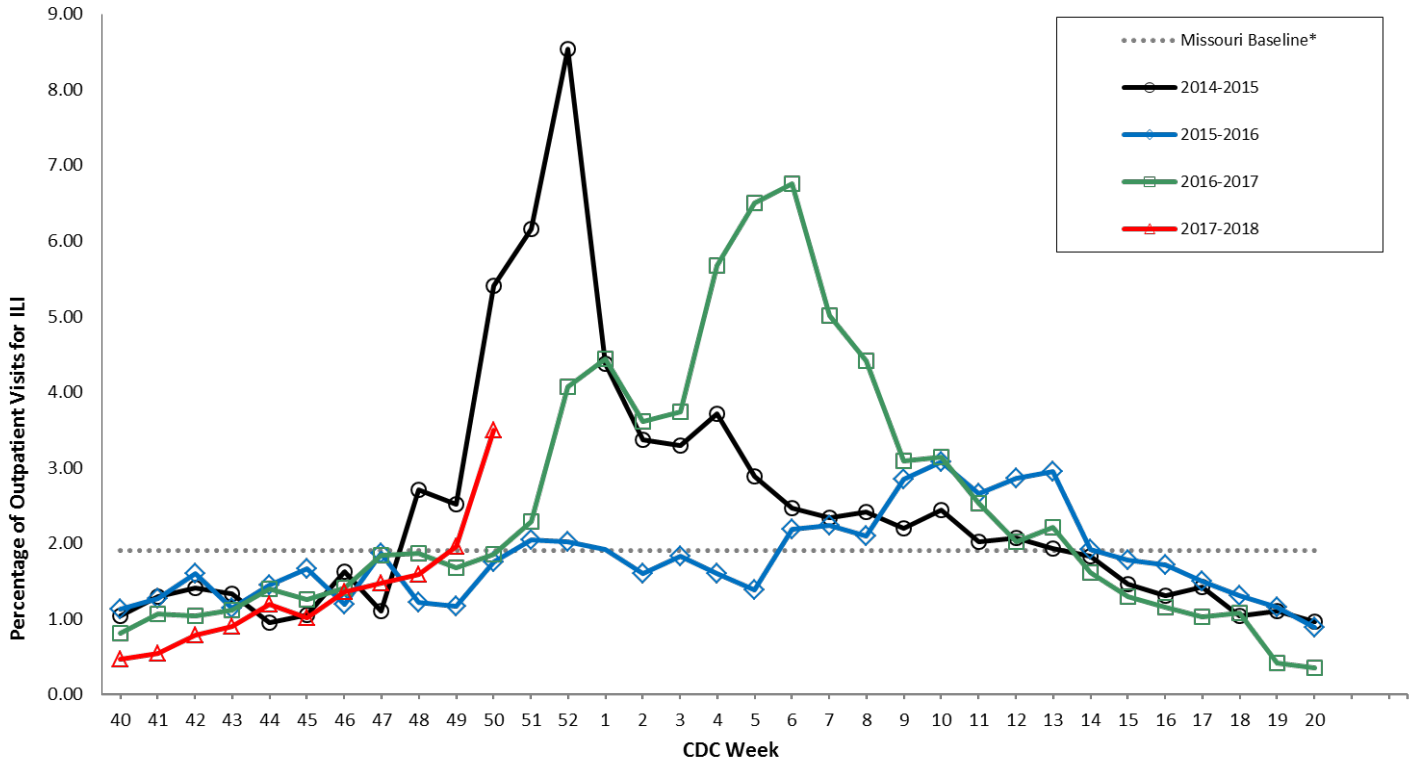
Figure 4. Number of Laboratory-positive[†] Influenza Cases by CDC Week, Missouri, 2014-2018^{*}



[†]Laboratory-positive influenza includes the following test methods: rapid influenza diagnostic tests (antigen), reverse transcriptase polymerase chain reaction (RT-PCR) and other molecular assays, immunofluorescence antibody staining (Direct (DFA) or Indirect (IFA)), or viral culture.

^{*}2017-2018 season-to-date through the week ending May 19, 2018 (Week 20). The 2014-2015 season had 53 weeks rather than the usual 52. Week 53, 2014-2015 flu season has 3,082 reported confirmed cases. Data Source: Missouri Health Information Surveillance System (WebSurv).

Figure 5. Percentage of Outpatient Visits for Influenza-like Illness (ILI), Missouri Outpatient ILI Surveillance Network (ILINet) 2014-2018*†

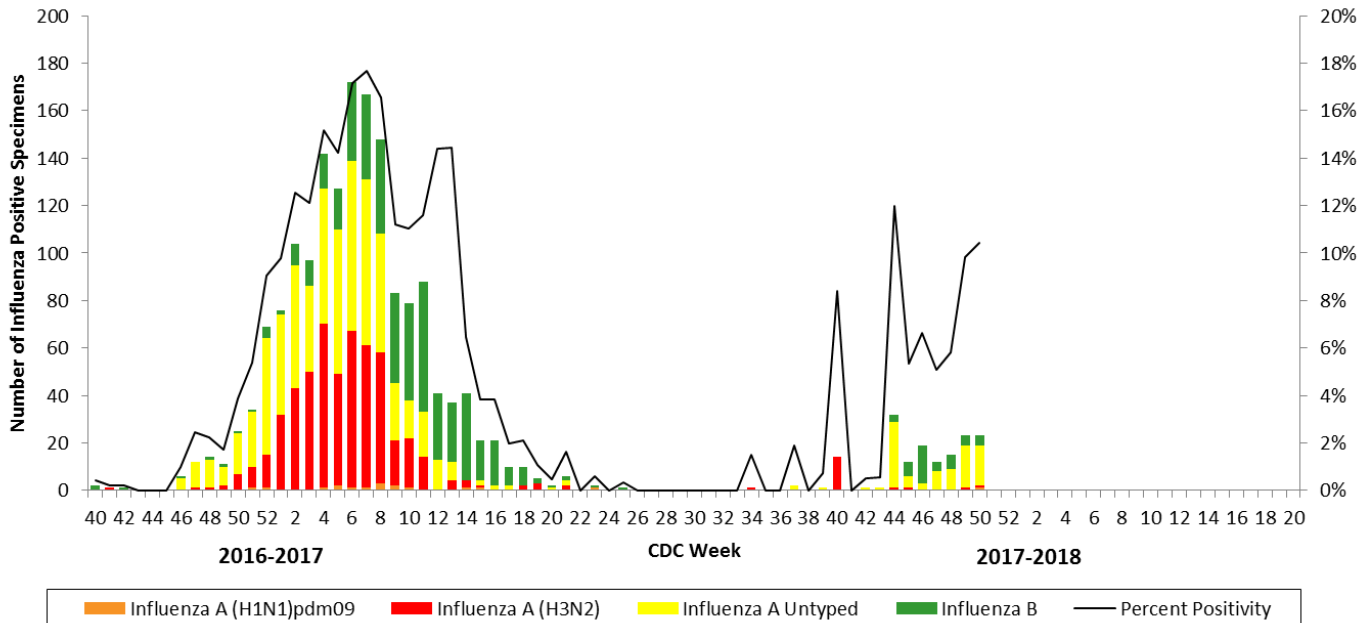


*The ILINet Region 7 (MO, IA, KS, NE) baseline is the mean percentage of patient visits for ILI during non-influenza weeks for the previous three seasons, plus two standard deviations. A non-influenza week is defined as periods of two or more consecutive weeks in which each week accounted for less than 2% of the season's total number of specimens that tested positive for influenza.

Data Source: U.S. Outpatient Influenza-like Illness Surveillance Network (ILINet), Centers for Disease Control and Prevention (CDC).

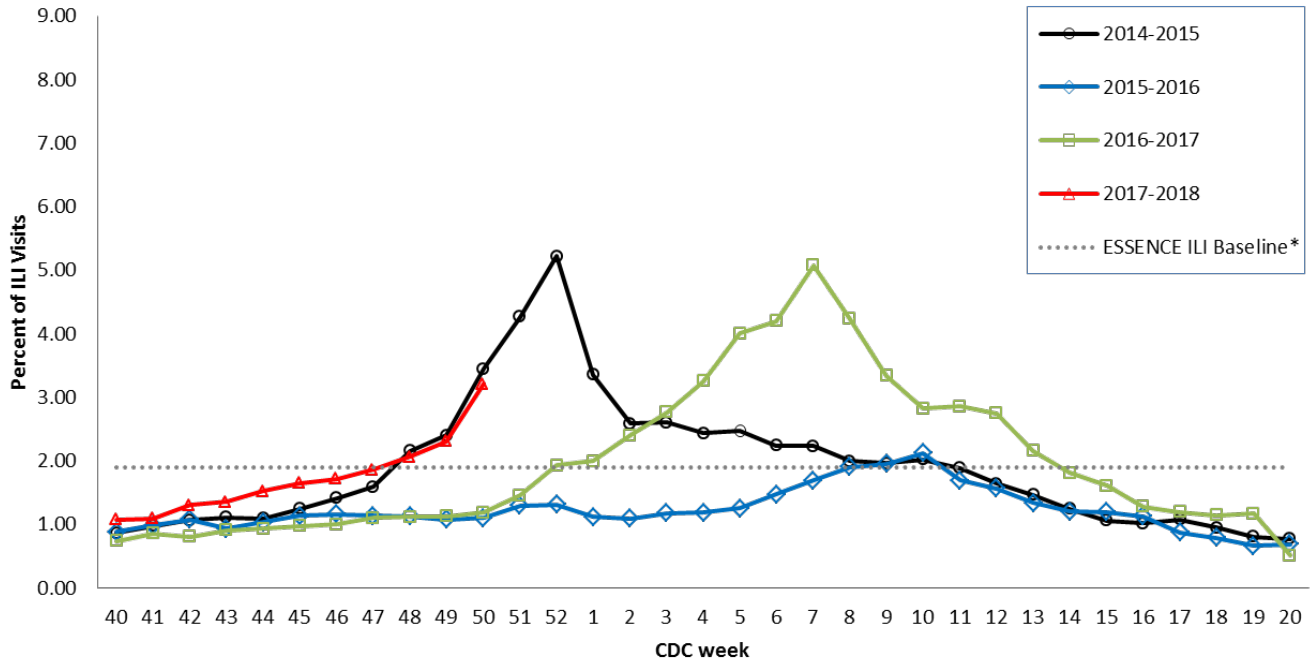
†2017-2018 season-to-date through the week ending May 19, 2018 (Week 20). The 2014-2015 season had 53 weeks rather than the usual 52. The percentage of outpatient visits for ILI during Week 53 was 7.63.

Figure 6. Season-to-Date PCR (+) Tests for Influenza in Missouri



Data Source: National Respiratory and Enteric Virus Surveillance System (NREVSS), Centers for Disease Control and Prevention (CDC). 2016-2017 season-to-date through the week ending May 19, 2018 (Week 20).

Figure 7. Percentage of Emergency Department (ED) Visits for Influenza-like Illness (ILI) in ESSENCE Participating Hospitals, 2014-2018 Influenza Seasons**



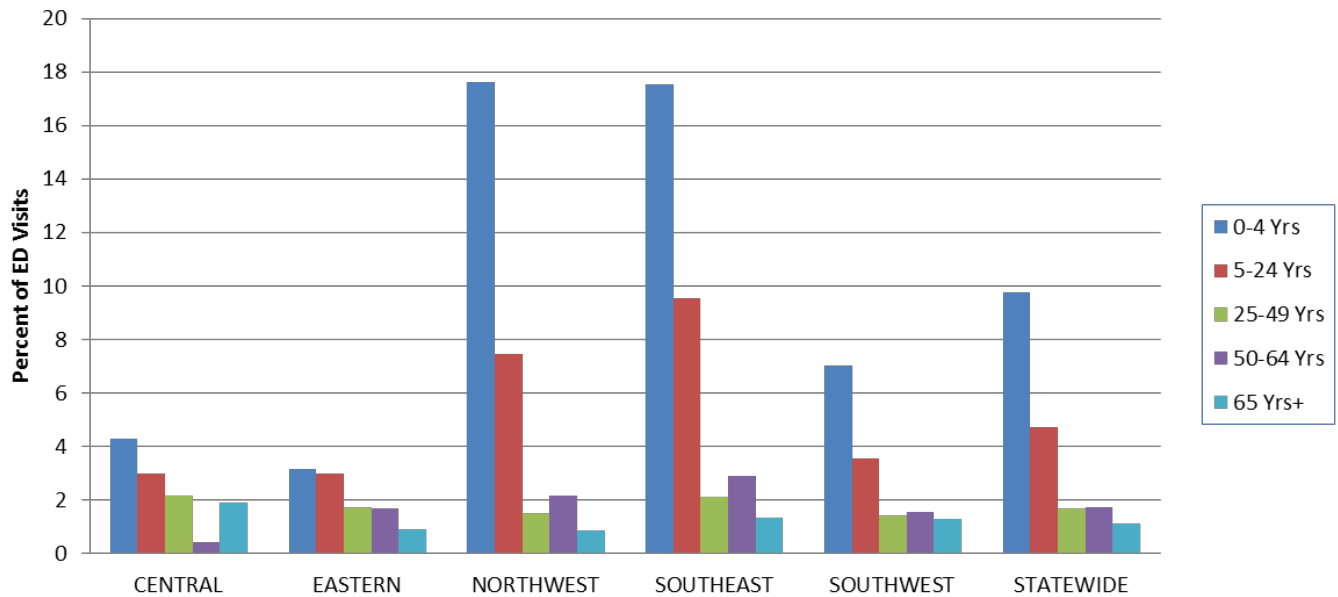
*The ESSENCE ILI Baseline is the mean percent of ILI visits for each week during the previous three years (2014-16) when percentage of ILI visits were less than 2% of total visits, plus two standard deviations.

Data Source: Missouri Department of Health and Senior Services (DHSS), Bureau of Reportable Disease Informatics, ESSENCE version 1.20.

†The 2014-2015 season had 53 weeks rather than the usual 52. The percentage of visits for ILI in ESSENCE participating hospitals during Week 53 was 4.38%.

**The ILI data from a small number of sites located in the Northwest Region of the state is temporarily unavailable in ESSENCE. Therefore, the ILI data for the Northwest Region should be interpreted with caution.

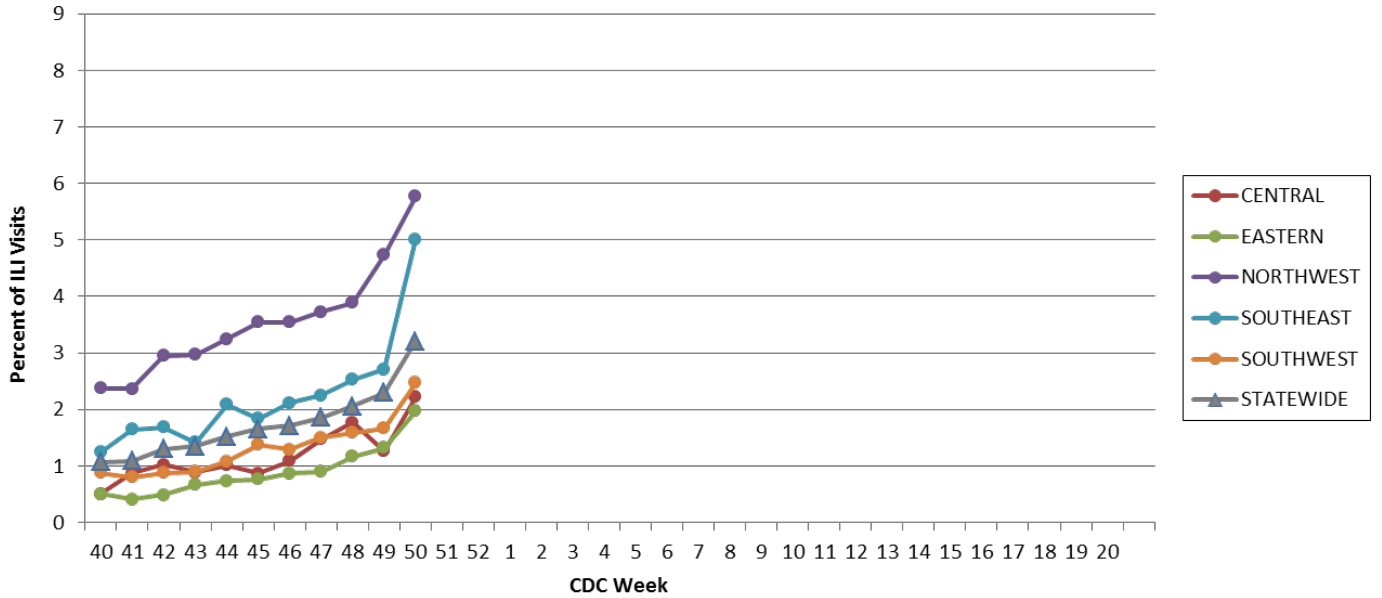
Figure 8. Percentage of Emergency Department (ED) Visits for Influenza-like Illness (ILI) in ESSENCE Participating Hospitals, by Age Group, Region and Statewide, Week 50, 2017*



Data Source: Missouri Department of Health and Senior Services (DHSS), Bureau of Reportable Disease Informatics, ESSENCE version 1.20.

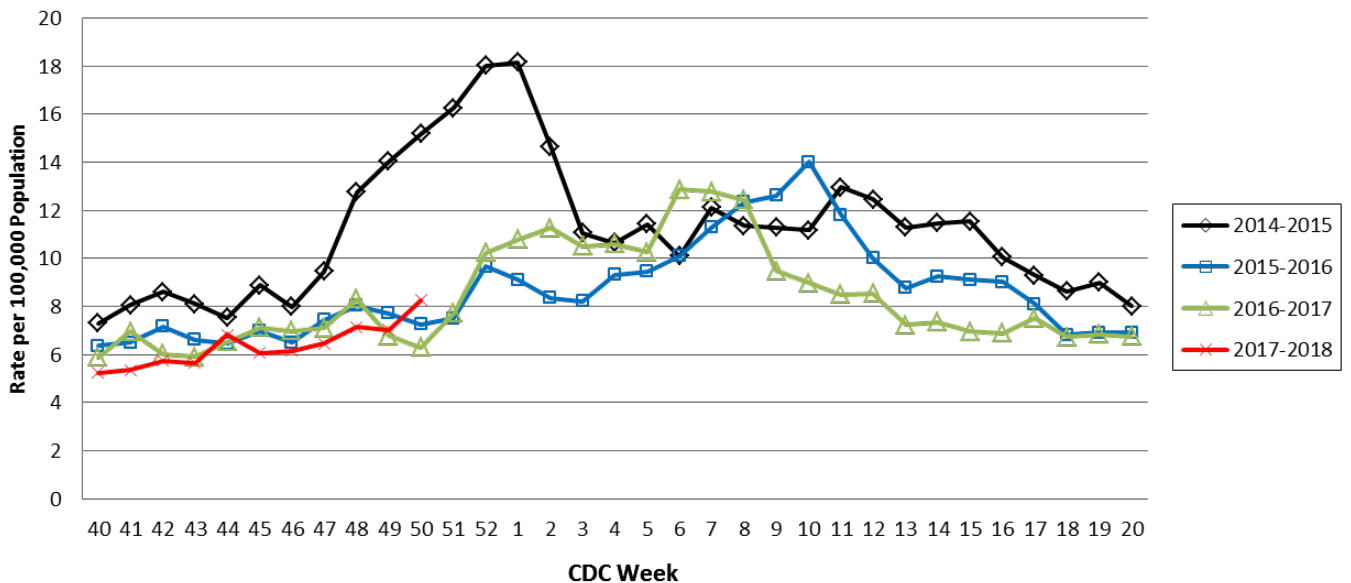
*The ILI data from a small number of sites located in the Northwest Region of the state is temporarily unavailable in ESSENCE. Therefore, the ILI data for the Northwest Region should be interpreted with caution.

Figure 9. Percentage of Emergency Department (ED) Visits for Influenza-like Illness (ILI) in ESSENCE Participating Hospitals, by Region and Statewide, 2017-2018 Influenza Season*



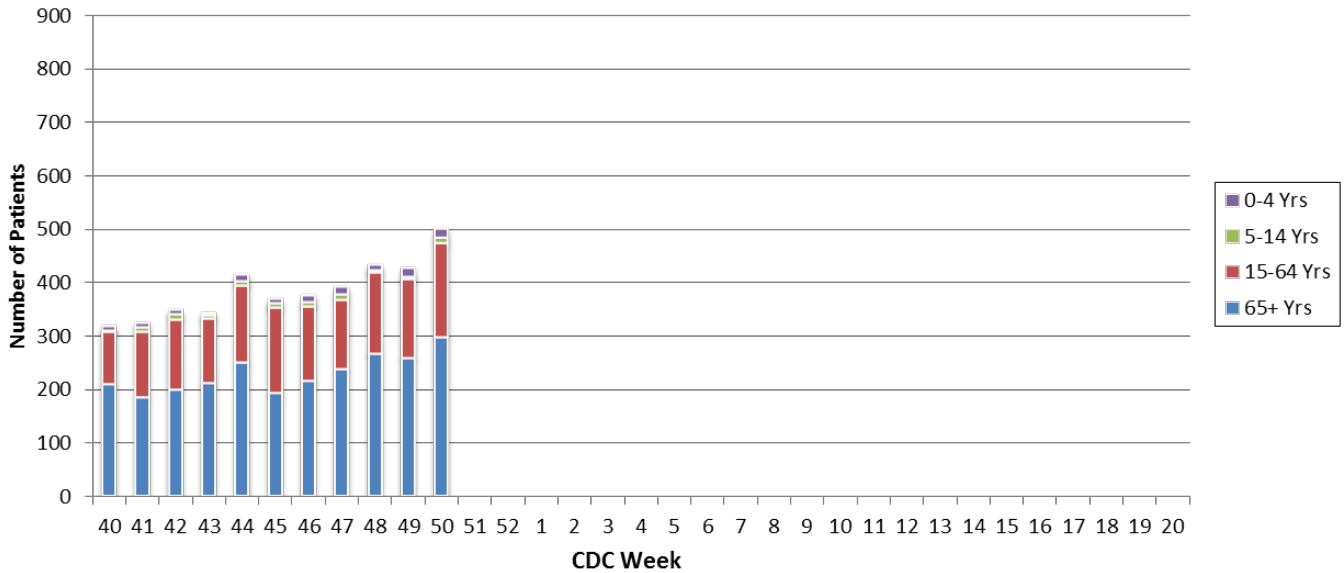
Data Source: Missouri Department of Health and Senior Services (DHSS), Bureau of Reportable Disease Informatics, ESSENCE version 1.20.
 *The ILI data from a small number of sites located in the Northwest Region of the state is temporarily unavailable in ESSENCE. Therefore, the ILI data for the Northwest Region should be interpreted with caution.

Figure 10. Weekly Rate of Patients Hospitalized with Influenza and/or Pneumonia Syndromes in Missouri Hospitals, 2014-2018 Influenza Seasons



Data Source: Missouri Department of Health and Senior Services (DHSS), Bureau of Reportable Disease Informatics, HL7 Messaging Portal.
 Population data from DHSS Population MICA 2015 (<http://health.mo.gov/data/mica/mica/population.php>).

Figure 11. Number of Patients Hospitalized with Influenza and/or Pneumonia Syndromes in Participating Missouri Hospitals, by Age Group, Week 50, 2017-2018 Influenza Season



Data Source: Missouri Department of Health and Senior Services (DHSS), Bureau of Reportable Disease Informatics, HL7 Messaging Portal.

Additional Influenza Data Sources:

Centers for Disease Control and Prevention: National Influenza Surveillance (FluView):

<http://www.cdc.gov/flu/weekly/fluactivitysurv.htm>

The National Respiratory and Enteric Virus Surveillance System (NREVSS):

<https://www.cdc.gov/surveillance/nrevss/>

World Health Organization: International Influenza Surveillance:

http://www.who.int/influenza/surveillance_monitoring/en/