



Missouri Weekly Influenza Surveillance Report 2019-2020 Influenza Season¹

Week 15: April 5, 2020 – April 11, 2020

All data are preliminary and may change as more reports are received.

Summary:

- The estimated influenza activity in Missouri is Sporadic².
- A total of 121 laboratory-positive³ influenza cases (64 influenza A and 57 influenza B) were reported during Week 15. The season-to-date total of laboratory-positive influenza cases is 112,965 (48.5% influenza A, 50.7% influenza B, and 0.8% untyped). The percentage of respiratory specimens testing positive for influenza in Missouri laboratories reporting to the National Respiratory and Enteric Virus Surveillance System (NREVSS) decreased during Week 15 (Figure 6). Influenza test results from the Missouri State Public Health Laboratory (MSPHL) are currently not available. The MSPHL has temporarily suspended routine influenza testing in order to divert available resources to COVID-19 testing.
- Influenza-like illness (ILI) activity was below baseline for the Missouri Outpatient ILI Surveillance Network (ILINet) and for the hospital emergency room visit chief complaint data reported through ESSENCE. The reported percentage of visits for ILI was 0.69% (Figure 5) and 1.78% (Figure 7) through ILINet and ESSENCE respectively.⁴ The ILI data from a small number of sites located in the Northwest Region of the state is currently unavailable in ESSENCE. Therefore, the ILI data for the Northwest Region should be interpreted with caution.
- A season-to-date total of 78 influenza-associated deaths have been reported in Missouri as of Week 15.⁵ During Week 14, 110 deaths involving Pneumonia and Influenza (P&I) were reported to the Bureau of Vital Records, resulting in a season-to-date total of 1,541 P&I associated deaths in Missouri.⁶
- Thirteen influenza outbreaks and eight school closures have been reported in Missouri as of Week 15.
- Seasonal influenza activity as reported by clinical laboratories in the United States continued to decrease sharply Week 14 and is now low. Influenza-like illness activity, while lower than previous week, is still elevated. National influenza surveillance information is prepared by CDC and is included in the weekly FluView report, which is available online at <http://www.cdc.gov/flu/weekly/fluactivitysurv.htm>.

¹The 2019-2020 influenza season begins CDC Week 40 (week ending October 5, 2019) and ends CDC Week 39 (week ending September 26, 2020).

²Sporadic is defined as: Small numbers of laboratory-confirmed influenza cases or a single laboratory-confirmed influenza outbreak has been reported, but there is no increase in cases of ILI.

³Laboratory-positive influenza includes the following test methods: rapid influenza diagnostic tests (antigen), reverse transcriptase polymerase chain reaction (RT-PCR) and other molecular assays, immunofluorescence antibody staining (Direct (DFA) or Indirect (IFA)), or viral culture.

⁴Influenza-like illness (ILI) is defined by ILINet as fever (temperature of 100°F [37.8°C] or greater) and a cough and/or a sore throat without a known cause other than influenza. ILI is defined by ESSENCE as Emergency Department chief complaints for Influenza or (FeverPlus and (Cough or SoreThroat) and not NonILIFevers).

⁵All influenza-associated deaths became reportable in Missouri in 2016. These reports are verified by local public health agencies and DHSS.

⁶The P&I data are obtained from vital statistics data using ICD-10 codes, which are available one week later. The P&I data for the CDC Week provided is the most current data available.

Surveillance Data:

Interactive Maps

The jurisdiction-specific influenza data are provided through interactive maps available at <http://bit.ly/moflu19>. Click on the jurisdiction to view the influenza data specific to that jurisdiction.

- Reported Laboratory-positive Influenza Cases by Influenza Type by Jurisdiction, CDC Week 15
- Reported Week-specific Rate per 100,000 Population, CDC Week 15
- Reported Laboratory-positive Influenza Cases by Influenza Type by Jurisdiction, Season-to-Date
- Reported Rate per 100,000 Population, Season-to-Date

Data Figures

Figure 1. Number of Laboratory-positive[†] Influenza Cases by Influenza Type, Missouri, CDC Week 15 (April 5, 2020 – April 11, 2020)*

Influenza Type	Week 13	Week 14	Week 15	2019-2020* Season-to-Date
Influenza A	766	199	64	54,802
Influenza B	669	188	57	57,299
Influenza Unknown Or Untyped	2	2	0	864
Total	1,437	389	121	112,965

[†]Laboratory-positive influenza includes the following test methods: rapid influenza diagnostic tests (antigen), reverse transcriptase polymerase chain reaction (RT-PCR) and other molecular assays, immunofluorescence antibody staining (Direct (DFA) or Indirect (IFA)), or viral culture.

*Influenza season begins week ending October 5, 2019 (CDC Week 40) Data Source: Missouri Health Information Surveillance System (WebSurv).

Figure 2. Number of Laboratory-positive[†] Influenza Cases and Case Rates by Age Group, Missouri, CDC Week 15 (April 5, 2020 – April 11, 2020)*

Age Group	Week 15 Cases	Week 15 Rate [‡]	2019-2020* Season-to-Date	2019-2020* Season-to-Date Rate [‡]
00-04	22	5.88	19,476	5,202.48
05-24	31	1.93	49,343	3,075.26
25-49	34	1.78	26,823	1,401.78
50-64	19	1.54	10,721	867.13
65+	15	1.57	6,601	691.26
Total	121	1.99	112,965	1,856.86

[†]Laboratory-positive influenza includes the following test methods: rapid influenza diagnostic tests (antigen), reverse transcriptase polymerase chain reaction (RT-PCR) and other molecular assays, immunofluorescence antibody staining (Direct (DFA) or Indirect (IFA)), or viral culture.

*Influenza season begins week ending October 5, 2019 (CDC Week 40) Data Source: Missouri Health Information Surveillance System (WebSurv)

[‡]Incidence Rate per 100,000 population

Figure 3. Number of Laboratory-positive[†] Influenza Cases and Case Rates by Region, Missouri, CDC Week 15 (April 5, 2020 – April 11, 2020)[‡]

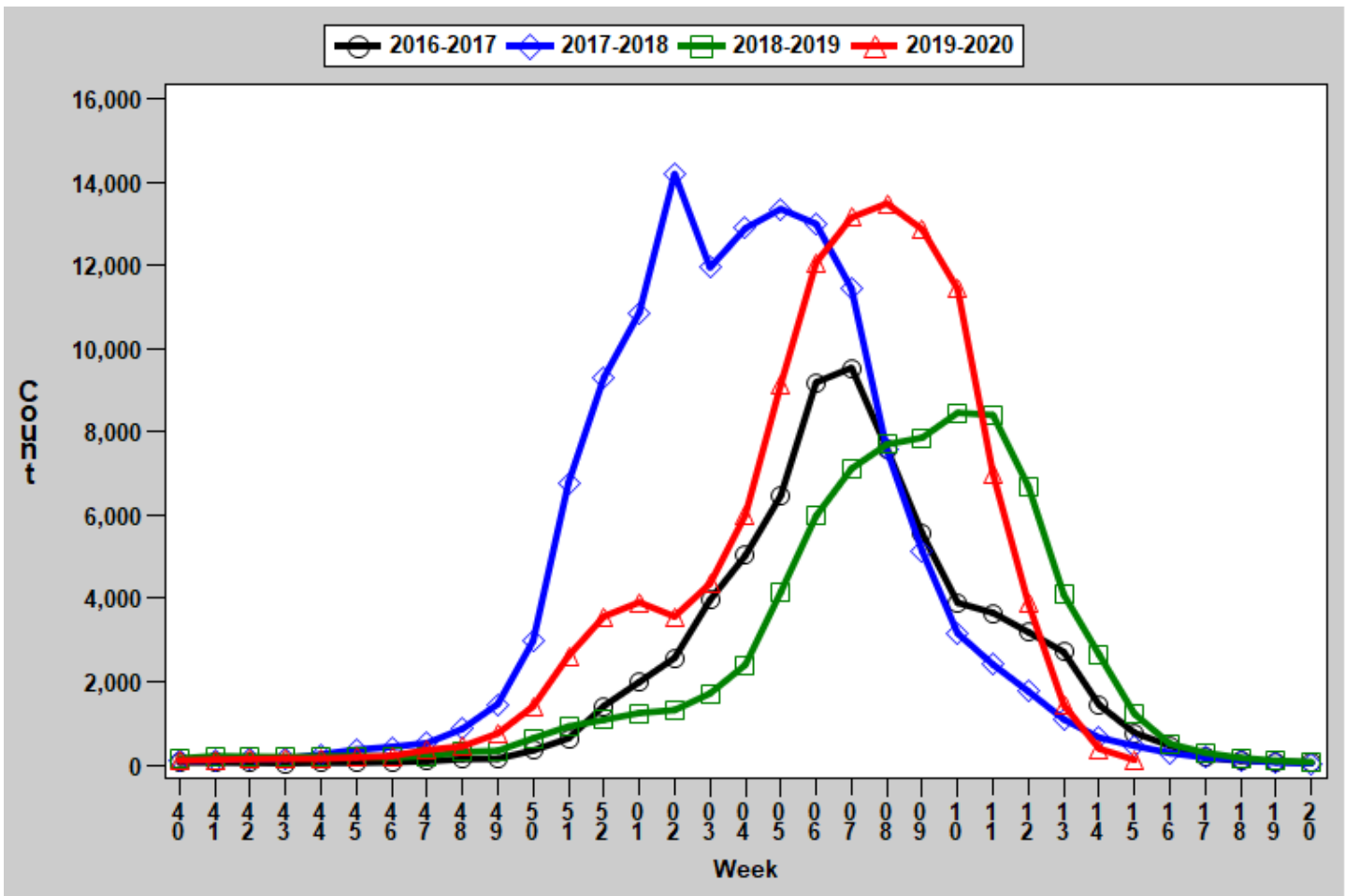
Region	Week 15 Cases	Week 15 Rate [‡]	2019-2020* Season-to-Date	2019-2020* Season-to-Date Rate [‡]
Central	7	1.03	14,981	2,212.86
Eastern	40	1.77	31,655	1,396.86
Northwest	39	2.44	33,035	2,067.89
Southeast	16	3.39	12,662	2,684.34
Southwest	19	1.77	20,632	1,925.88
Total	121	1.99	112,965	1,856.86

[†]Laboratory-positive influenza includes the following test methods: rapid influenza diagnostic tests (antigen), reverse transcriptase polymerase chain reaction (RT-PCR) and other molecular assays, immunofluorescence antibody staining (Direct (DFA) or Indirect (IFA)), or viral culture.

*Influenza season begins week ending October 5, 2019 (CDC Week 40) Data Source: Missouri Health Information Surveillance System (WebSurv)

[‡]Incidence Rate per 100,000 population

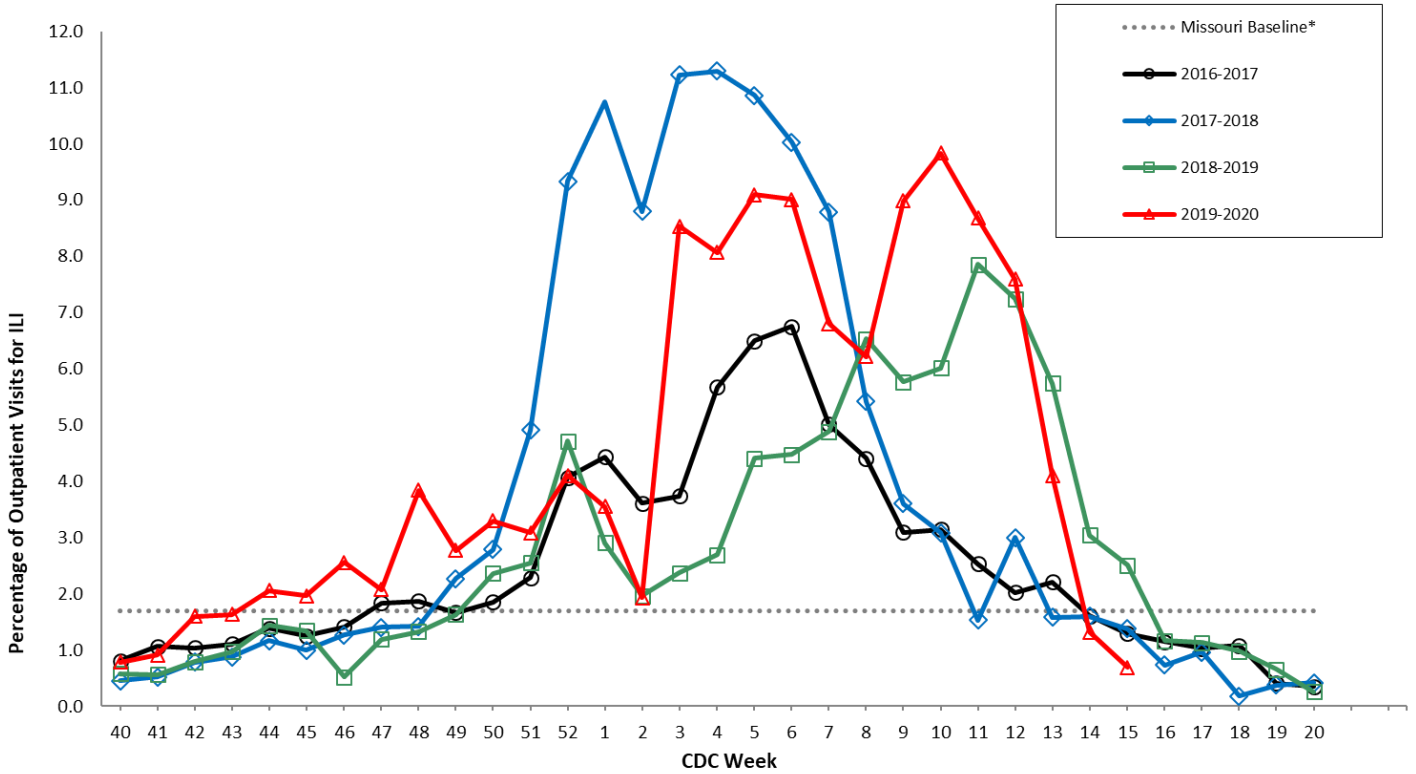
Figure 4. Number of Laboratory-positive[†] Influenza Cases by CDC Week, Missouri, 2016-2020*



[†]Laboratory-positive influenza includes the following test methods: rapid influenza diagnostic tests (antigen), reverse transcriptase polymerase chain reaction (RT-PCR) and other molecular assays, immunofluorescence antibody staining (Direct (DFA) or Indirect (IFA)), or viral culture.

*2019-2020 season-to-date through the week ending May 16, 2020 (Week 20). Data Source: Missouri Health Information Surveillance System (WebSurv).

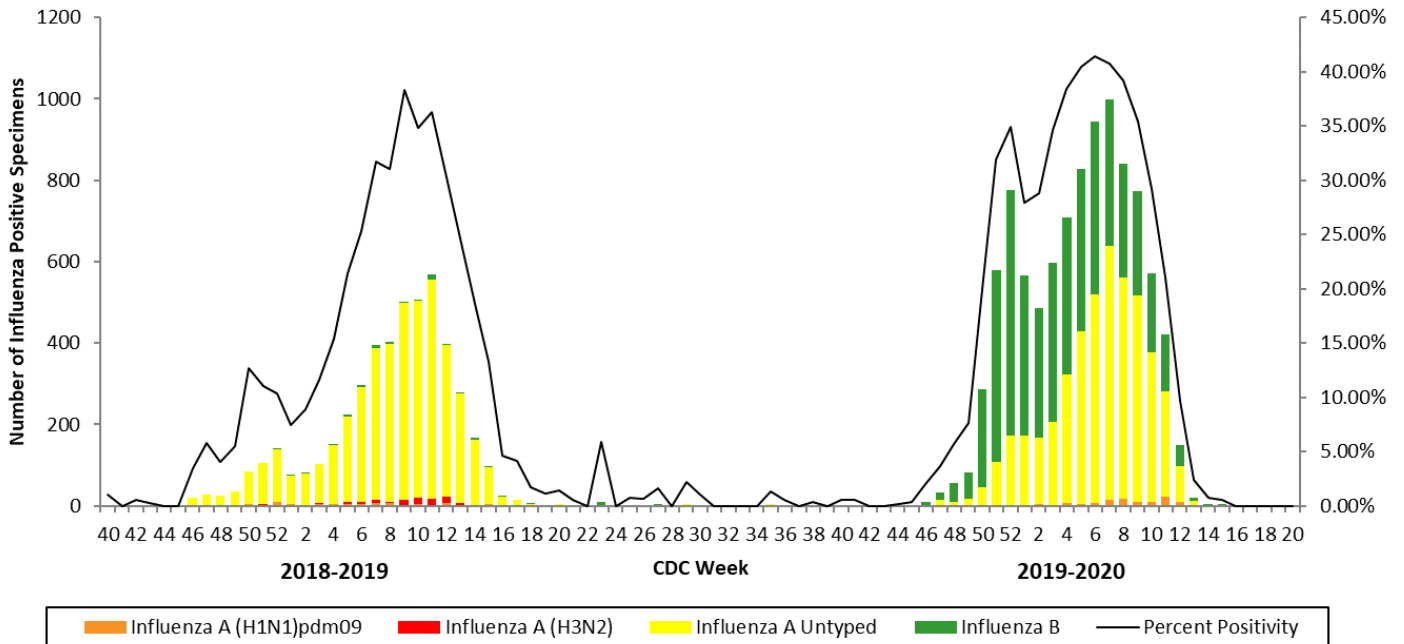
Figure 5. Percentage of Outpatient Visits for Influenza-like Illness (ILI), Missouri Outpatient ILI Surveillance Network (ILINet) 2016-2020*†



*The ILINet Region 7 (MO, IA, KS, NE) baseline is the mean percentage of patient visits for ILI during non-influenza weeks for the previous three seasons, plus two standard deviations. A non-influenza week is defined as periods of two or more consecutive weeks in which each week accounted for less than 2% of the season's total number of specimens that tested positive for influenza. Data Source: U.S. Outpatient Influenza-like Illness Surveillance Network (ILINet), Centers for Disease Control and Prevention (CDC).

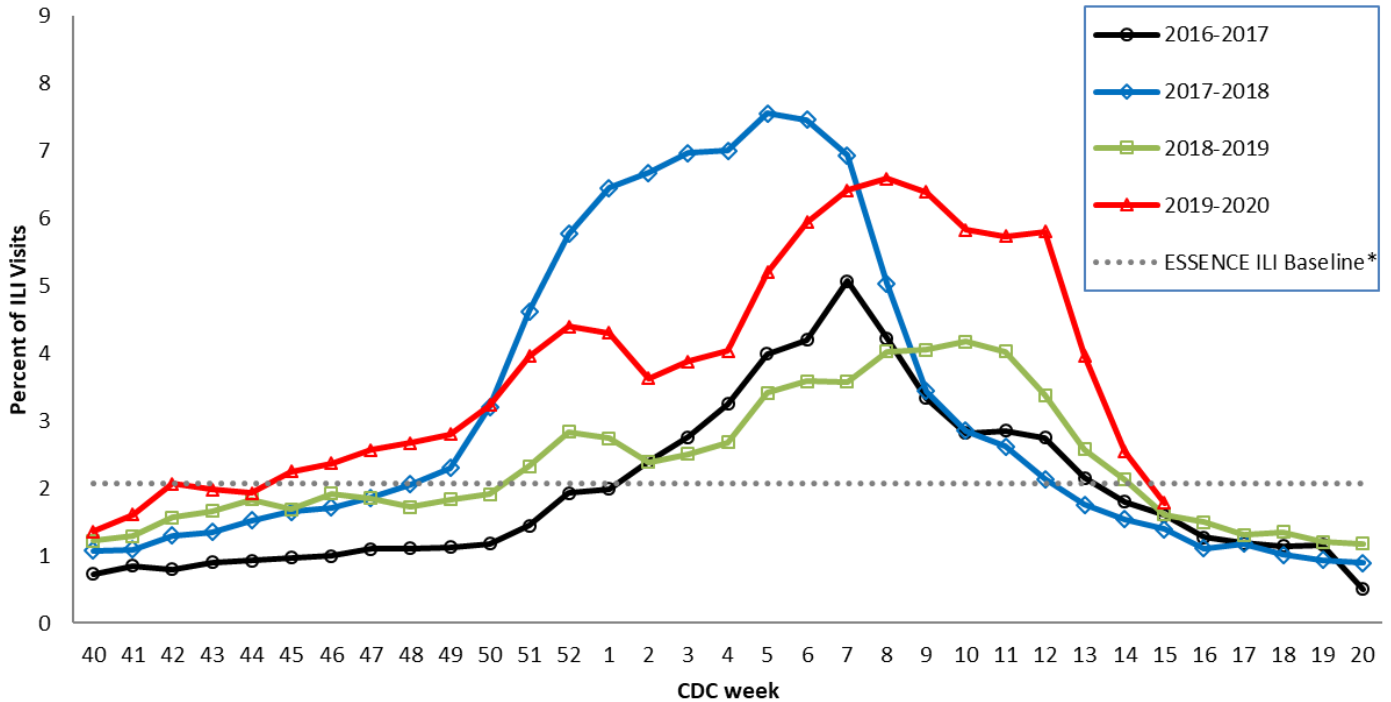
†2019-2020 season-to-date through the week ending May 16, 2020 (Week 20).

Figure 6. Season-to-Date PCR (+) Tests for Influenza in Missouri



Data Source: National Respiratory and Enteric Virus Surveillance System (NREVSS), Centers for Disease Control and Prevention (CDC). 2019-2020 season-to-date through the week ending May 16, 2020 (Week 20).

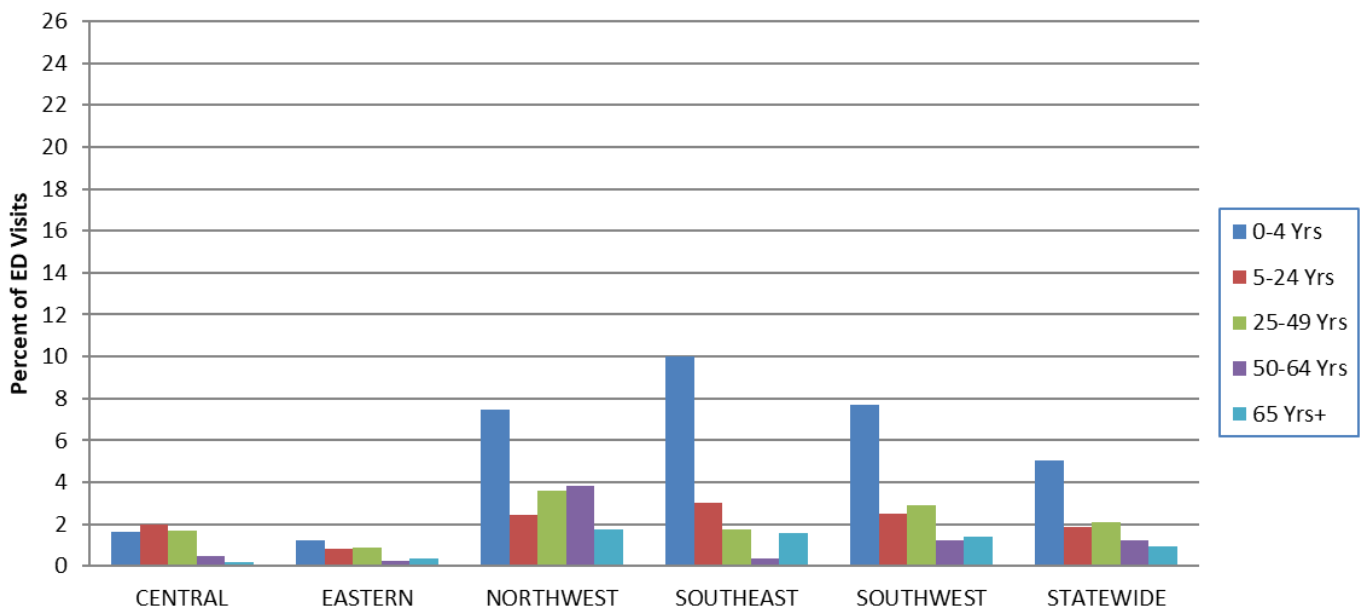
Figure 7. Percentage of Emergency Department (ED) Visits for Influenza-like Illness (ILI) in ESSENCE Participating Hospitals, 2016-2020 Influenza Seasons**



*The ESSENCE ILI Baseline is the mean percent of ILI visits for each week during the previous three years (2016-18) when percentage of ILI visits were less than 2% of total visits, plus two standard deviations. Data Source: Missouri Department of Health and Senior Services (DHSS), Bureau of Reportable Disease Informatics, ESSENCE version 1.20.

†The ILI data from a small number of sites located in the Northwest Region of the state is temporarily unavailable in ESSENCE. Therefore, the ILI data for the Northwest Region should be interpreted with caution.

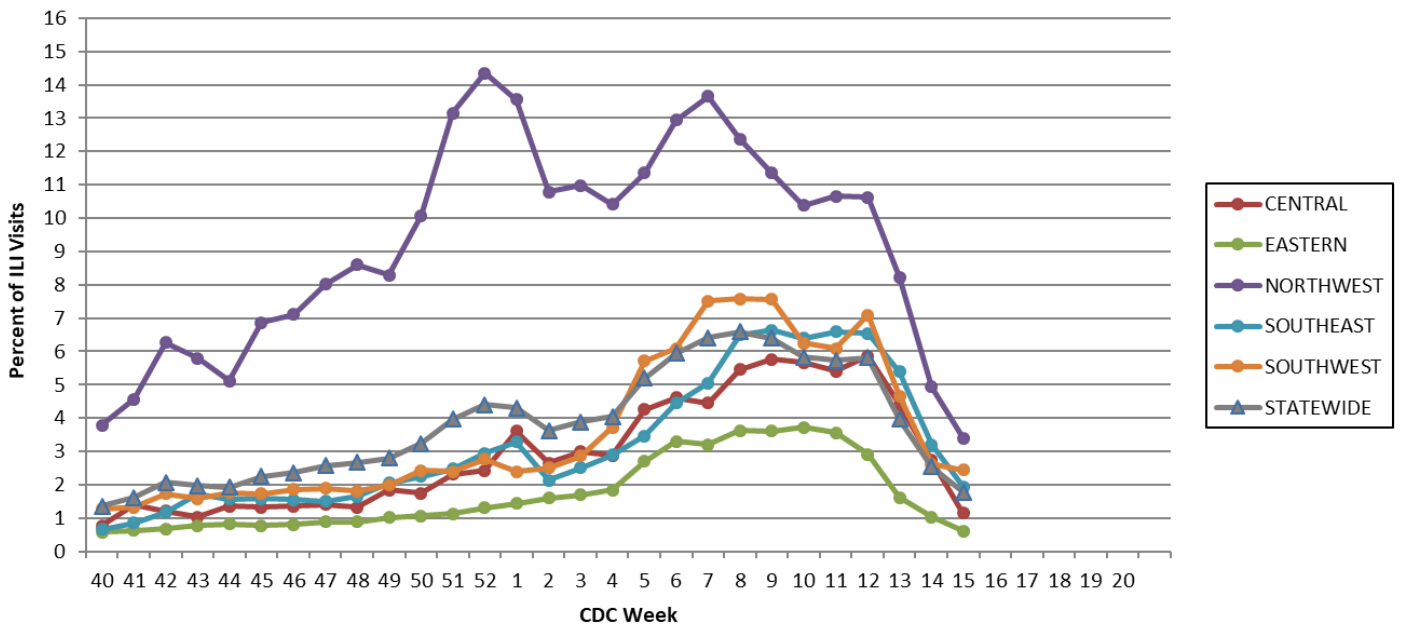
Figure 8. Percentage of Emergency Department (ED) Visits for Influenza-like Illness (ILI) in ESSENCE Participating Hospitals, by Age Group, Region and Statewide, Week 15, 2020*



Data Source: Missouri Department of Health and Senior Services (DHSS), Bureau of Reportable Disease Informatics, ESSENCE version 1.20.

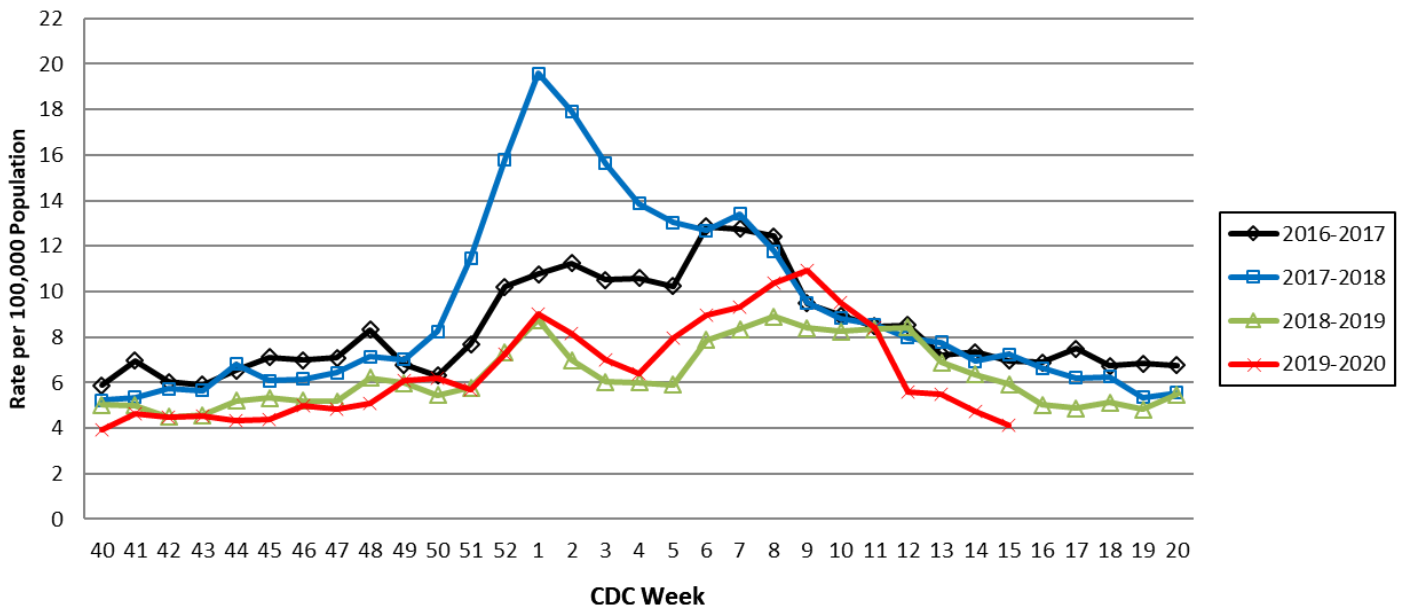
*The ILI data from a small number of sites located in the Northwest Region of the state is temporarily unavailable in ESSENCE. Therefore, the ILI data for the Northwest Region should be interpreted with caution.

Figure 9. Percentage of Emergency Department (ED) Visits for Influenza-like Illness (ILI) in ESSENCE Participating Hospitals, by Region and Statewide, 2019-2020 Influenza Season *



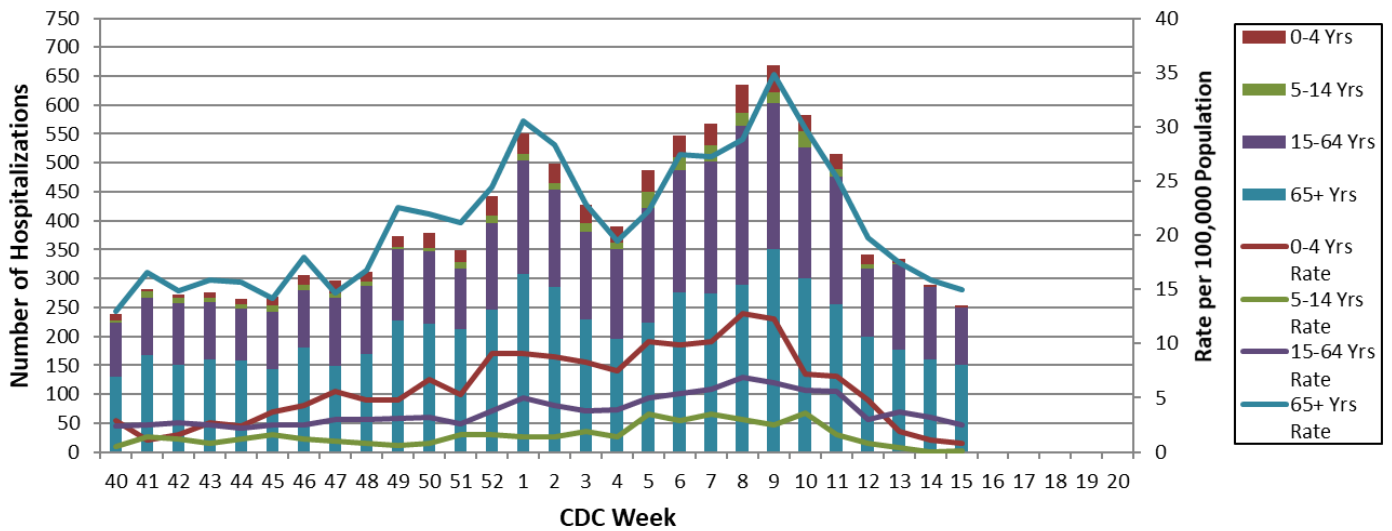
Data Source: Missouri Department of Health and Senior Services (DHSS), Bureau of Reportable Disease Informatics, ESSENCE version 1.20.
 *The ILI data from a small number of sites located in the Northwest Region of the state is temporarily unavailable in ESSENCE. Therefore, the ILI data for the Northwest Region should be interpreted with caution.

Figure 10. Weekly Rate of Patients Hospitalized with Influenza and/or Pneumonia Syndromes in Missouri Hospitals, 2016-2020 Influenza Seasons



Data Source: Missouri Department of Health and Senior Services (DHSS), Bureau of Reportable Disease Informatics, HL7 Messaging Portal.
 Population data from Missouri Census Data Center 2017 (<https://census.missouri.edu>).

Figure 11. Number of Patients Hospitalized with Influenza and/or Pneumonia Syndromes in Participating Missouri Hospitals, by Age Group, Week 15, 2019-2020 Influenza Season



Data Source: Missouri Department of Health and Senior Services (DHSS), Bureau of Reportable Disease Informatics, HL7 Messaging Portal.

Additional Influenza Data Sources:

Centers for Disease Control and Prevention: National Influenza Surveillance (FluView):
<http://www.cdc.gov/flu/weekly/fluactivitysurv.htm>

The National Respiratory and Enteric Virus Surveillance System (NREVSS):
<https://www.cdc.gov/surveillance/nrevss/>

World Health Organization: International Influenza Surveillance:
http://www.who.int/influenza/surveillance_monitoring/en/