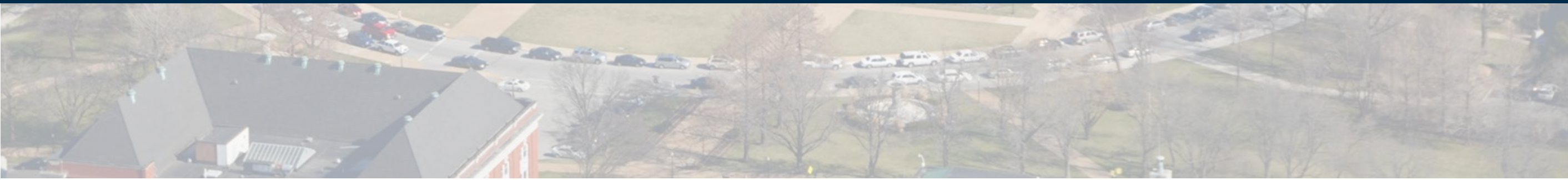




Master Plan on Aging: Safety & Security Subcommittee

Subcommittee Kick-Off Meeting (April 14, 2023)



Agenda

Topic	Slide
Introduction of co-chairs and subcommittee members	2
Introduction to the Missouri Master Plan on Aging	5
Safety & Security Subcommittee's Work in Year One	10

Introduction of the Co-Chairs and Subcommittee Members

Co-Chairs

On Aug. 27, 2018, Gov. Mike Parson appointed **Sandy Karsten** as the 15th Director of the Missouri Department of Public Safety. Prior to her appointment, Karsten served as the Superintendent of the Missouri State Highway Patrol. Karsten was the first woman in the history of the Missouri State Highway Patrol to serve as Colonel and is the first woman to serve as Director of the Department of Public Safety.

As the leader of DPS, Director Karsten is responsible for coordinating services that enhance the safety and security of millions of residents and visitors across Missouri. Karsten has demonstrated an unwavering commitment to public service and is firmly dedicated to earning the public's trust through enhanced accountability and transparency. Director Karsten has been employed by DPS since 1985 and has earned the distinction of obtaining every rank from trooper to colonel, and now director.

Director Karsten holds a Bachelor of Science degree in criminal justice from Truman State University, Kirksville, and a master's degree in public administration from the University of Missouri. Karsten is also a graduate of the Northwestern University Traffic Institute's School of Police Staff and Command. Karsten and her husband, Tim, have two grown sons.

Catherine Vannier is the Special Victims Resource Prosecutor for the Missouri Office of Prosecution Services (MOPS). Over more than 16 years, Catherine has developed and expanded the MOPS Special Victims' Program to assist and train thousands of justice professionals. Prior to coming to MOPS, Catherine had 11 years of experience prosecuting criminal cases full time.

Catherine serves as an appointed member of the Statewide Council on Human Trafficking as well as the Supreme Court's Commission on Domestic Violence and Human Trafficking, and the Attorney General's Sexual Assault Kit Initiative. Catherine also co-chairs the Supreme Court Commission's Lethality & Risk Assessment Subgroup. Catherine also leads the Missouri Elder Abuse & Financial Exploitation Response Coordination Team. Catherine has served on a number of other groups, including the Child Sexual Abuse Prevention Task Force, chairing the Multi-Disciplinary Team Best Practices Working Group, as well as the Department of Public Safety's Cyber Crimes Advisory Group, the State Child Fatality Review Panel, the Sexual Assault Response Working Group, the Department of Public Safety's STOP Implementation Group, the Missouri Victim's Assistance Network's Board of Directors and the Missouri Association of Prosecuting Attorney's Best Practices Initiative Special Victims' Subcommittee, as well as the Prosecutor Wellness Initiative.

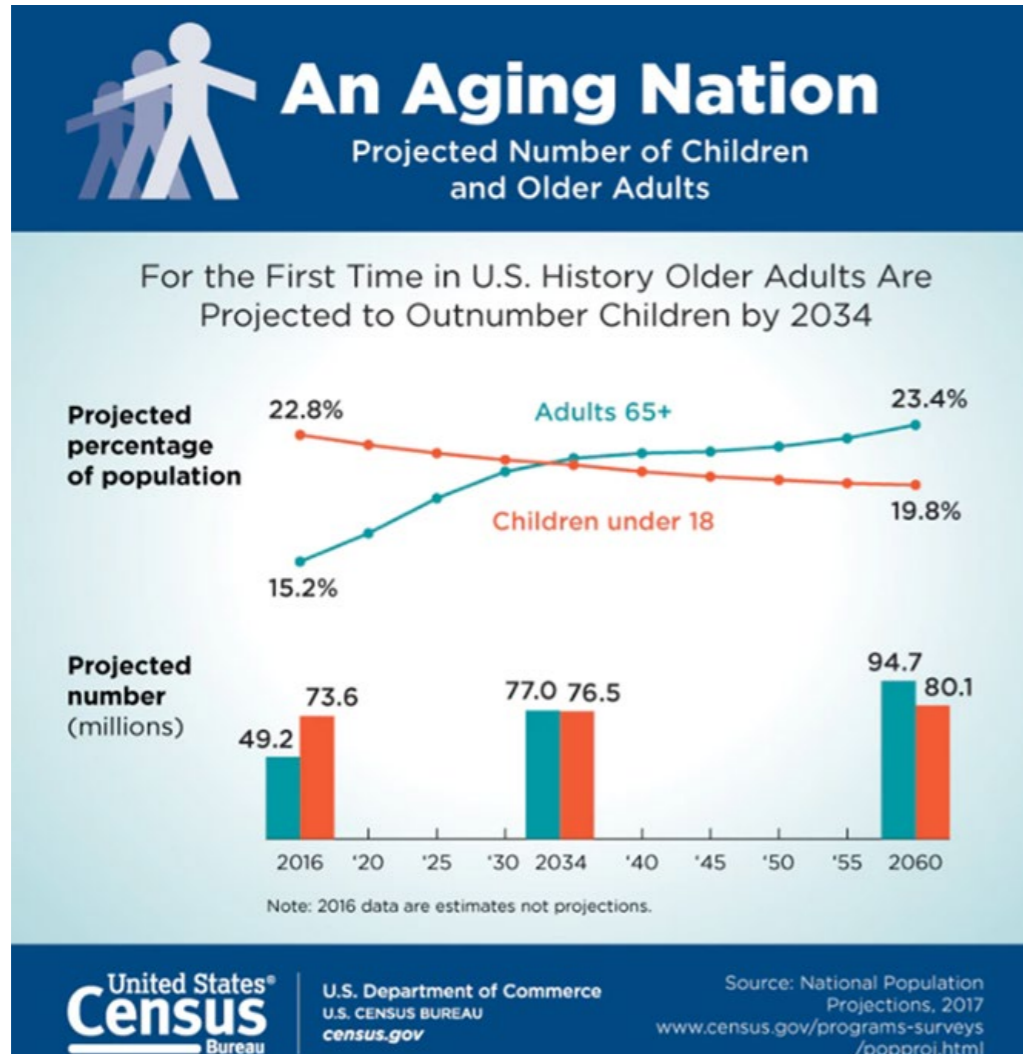
Subcommittee Membership

Cathy Arrowsmith, Marion County Services for the Developmentally Disabled
Nicole Brueggeman, Missouri Council on Aging
Liz Calvin, Constituent
Max Cook, MO Banking Association
Carrie Couch, DCI
Marcia Davis, DHSS Constituent and Emergency Services
Catherine Edwards, St. Louis Elder Financial Protection Coalition
Samantha Ferguson Knight, LifeWise STL (Kingdom House)
Becca Fields, Senior Age Area Agency on Aging
Bobbi Jo Garber, Advancing States
Nikki Gatlin, DHSS Adult Protective Services
Jerry Greene, Office of Special Investigations
Tim Jackson, DHSS
Carol Johnson, Public Administrators Association
Nicole Jones, DMH
Linda Kerr-Davis, Regional Commissioner Social Security

Samantha Knight, LifeWise STL
Jacob Lauer, Missouri Protection and Advocacy
Kristi Luebbering, DHSS Division of Regulation and Licesure
Jordanna McLeod, DHSS Bureau of Senior Programs
Rona McNally, Senior Medicare Patrol
Rick Murray, Silver Haired Legislature
Chief Bob Muenz, Missouri Police Chief's Association
Sheriff Bill Puett, Missouri Sheriff's Association
Jim Ruedin, Delta Center
Kelly Schoenbauer, DMH
Kristi Siler, DHSS Adult Protective Services
Kim Stock, DMH
Nikki Strong, Missouri Health Care Association
Harvey Tettlebaum, Husch Blackwell
Janice Thomas, Voyce
Mary Tucker, St. Louis Elder Financial Protection Coalition
Mindy Ulstad, DHSS Bureau of Senior Programs
Erica Ziegler, DHSS Division of Cannabis Regulation

Introduction to the Missouri Master Plan on Aging (Why are we here?)

Background



- Missouri seniors age 60+ make up 24.39% of the population
- By 2034, Missouri seniors will make up more than 25% of Missouri's population (for the first time there will be more older adults than individuals younger than 18 years of age).
- This gap will continue to widen as the population continues to age with Missouri seniors predicted to greatly outnumber children by 2060.

What is a Master Plan on Aging

A Master Plan on Aging is a living document that:

- Provides a clear framework to plan for ten years or more;
- Enables governors to communicate a clear vision and priorities for their state;
- Guides state and local policies of public and private programs toward aging with dignity;
- Reflects extensive input from the community, including people of all ages and abilities; and
- Allows the state to allocate funding or resources to implement initiatives from the Master Plan vs. reacting to individual stakeholder needs

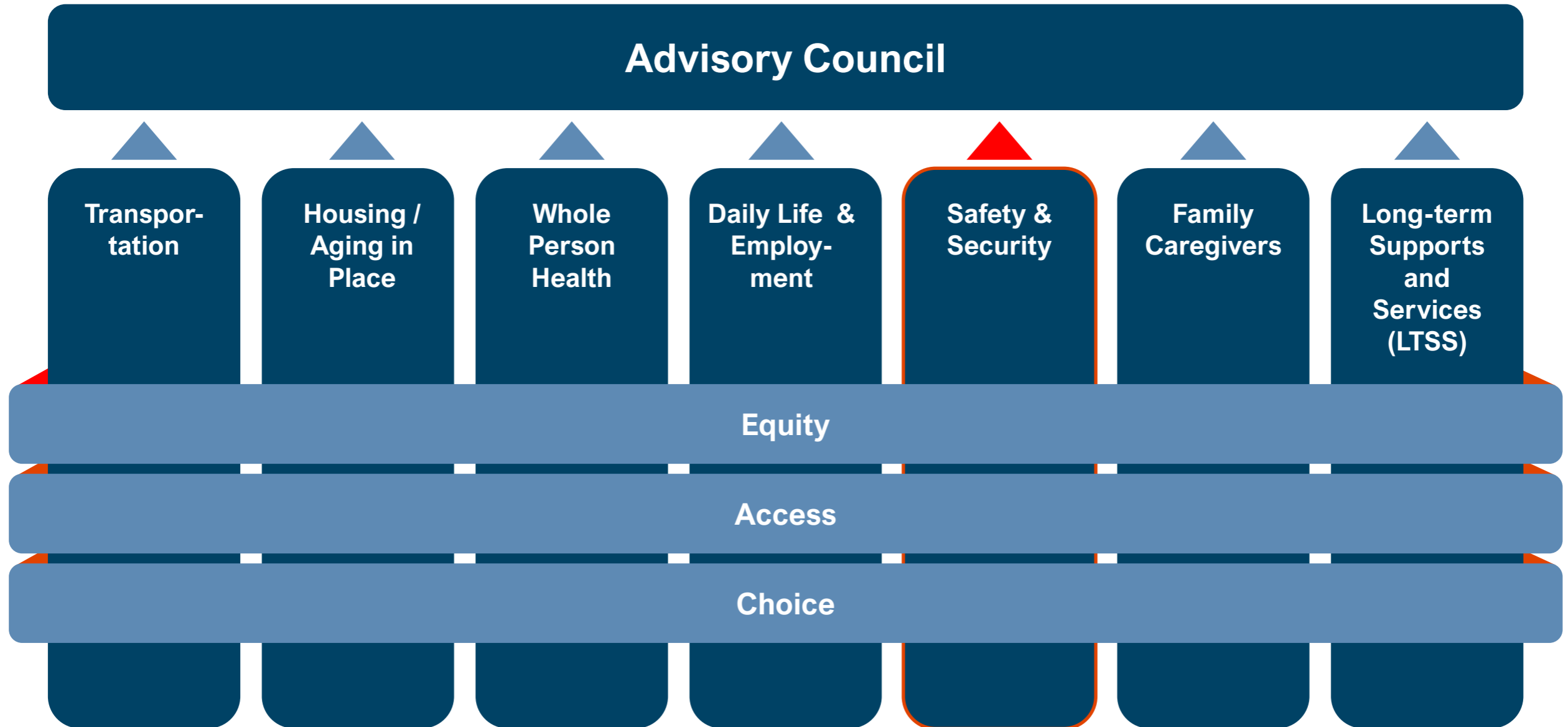
Start with Why

- WHY: We all deserve to age with independence and dignity
- HOW: Deep engagement with Missourians across the state
- WHAT: 10 Year Master Plan on Aging



The Golden Circle (Simon Sinek)

Advisory Council and Subcommittees



Safety and Security Subcommittee's Work in Year One:
Understanding Vulnerabilities, Making Recommendations

Understanding Vulnerabilities, Making Recommendations

During the first year, the Safety & Security Subcommittee will work to identify:

- How to end financial fraud, abuse, neglect and exploitation of vulnerable adults?
- How to feel safe at home and in the community?
- What is working well that we should expand upon?
- What gaps and opportunities exist?
- Based upon this learning, what does the committee recommend?